

TITLE: EXISTING HEALTHCARE FACILITIES LOCATIONS IN MANIPUR

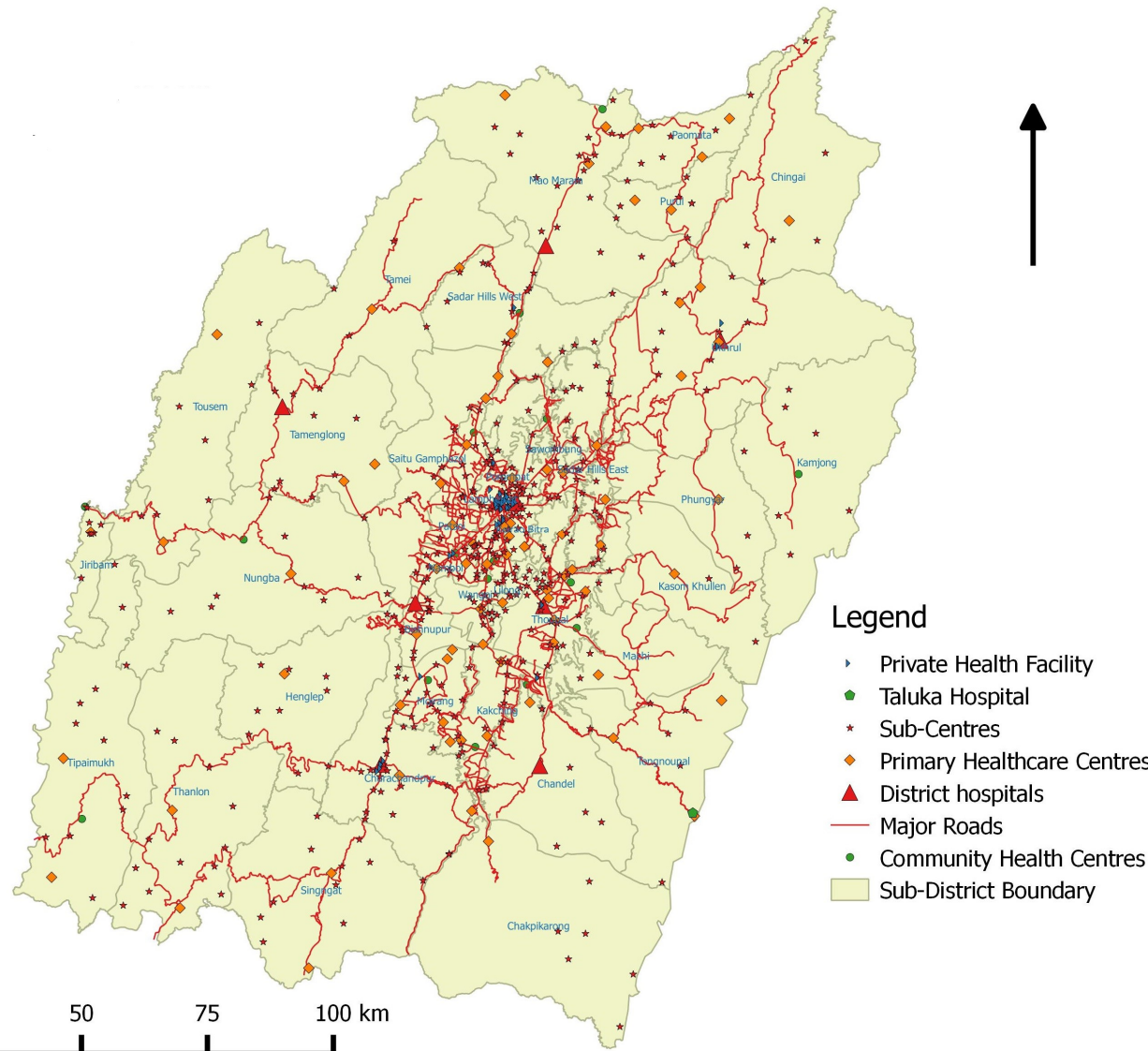
Map Information

Introduction

The state of Manipur is located in North-Eastern part of India and consists of 16 new districts and 38 blocks. Manipur earlier had 9 districts, the 7 new districts were added in the year 2016.

Health facilities hierarchy

- There are 421 PHSCs, 85 PHCs, 17 CHCs, One Sub-Divisional Hospital (SDH), seven District Hospitals (DH) and two State/Centrally funded public hospitals.
- The public healthcare facilities are mainly clustered in the valley regions whereas there is scarcity of healthcare facilities in the hilly region because of poor transportation infrastructure.



Name of team members: Dr. Bakimchandra Oinam, Vicky Anand, N. Bidyarani

Topic: Public Health, ID- mapathon3377

Name of Organization : NIT Manipur